



WINDOW TECHNOLOGY
DOOR TECHNOLOGY
AUTOMATIC ENTRANCE SYSTEMS
BUILDING MANAGEMENT SYSTEMS



DOOR TECHNOLOGY – ORDER CATALOG | SECTION 03.11



Tools & Accessories for Door Lock Installation



Securing technology for you







03.11

Tools & Accessories for Door Lock Installation

Door Slab Jig.....	03.11.5
Router Bases	03.11.6
Router Bits for Euro Groove and Mortise Lockcases.....	03.11.7
Strike Plates Template	03.11.8
Astragal Mortise Lock Template	03.11.9
Gripset Handle Hole Preparation Jig	03.11.10
Lever Handle Hole Preparation Jig	03.11.11
Accessories	03.11.12



Door Slab Jig

for GU-SECURITY SH2, Automatic and S-Bolt Locks

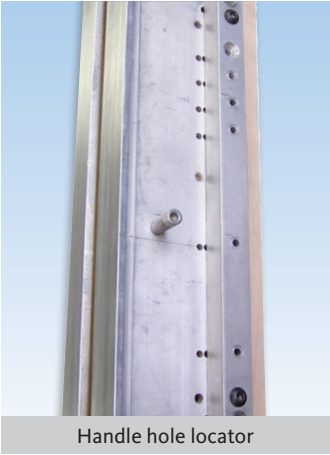


Door Slab Jig			
Description	Color	PU	Part Number
Jig for 6' 8" and 8' doors	Aluminum	1	K-C8890-00-0-0
* = Color		PU = Packaging Unit	

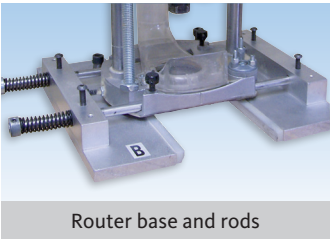
- Additional information**
- Door slab jig for 6' 8" and 8' standard and custom door heights
 - For 1 3/4" and 2 1/4" door thickness
 - Includes router base and rods
 - Includes allen keys and center locating punch
 - Dewalt plunge router DW625 not included



Adjustable for door thickness



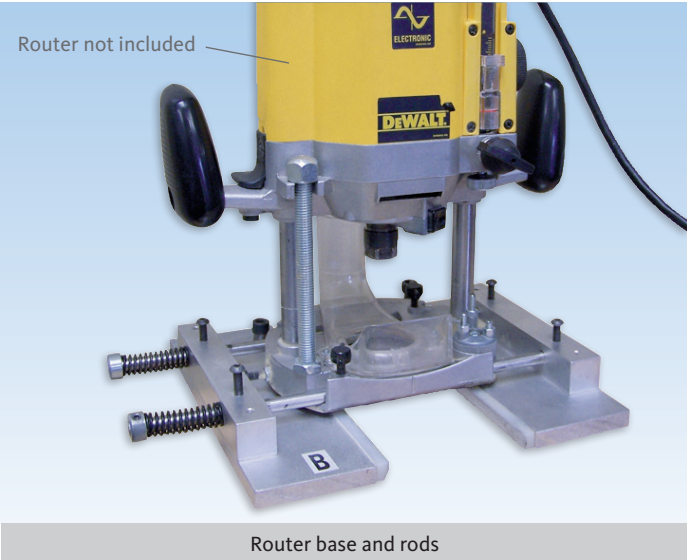
Handle hole locator



Router base and rods

Router Bases

for GU-SECURY SH2, Automatic and S-Bolt Locks



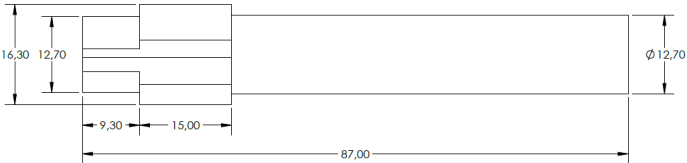
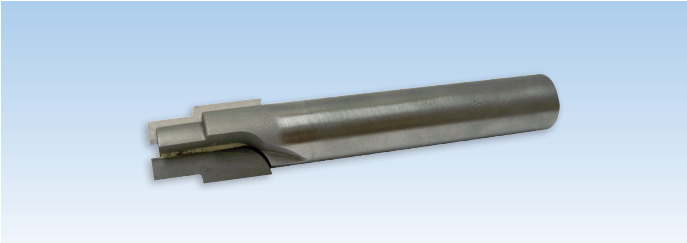
Router Bases			
Description	Color	PU	Part Number
Router base	Aluminum	1	K-C8895-DW-0-0
PU = Packaging Unit			

Additional information

- Compatible with Dewalt router DWE625

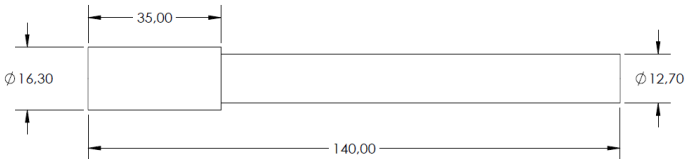
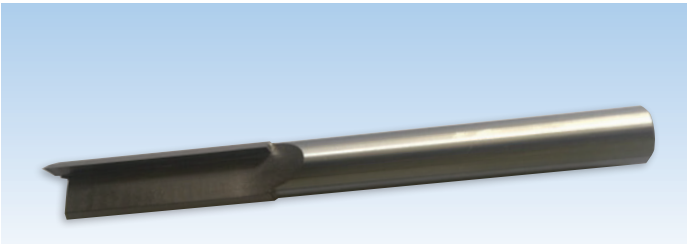
Router Bits

for Euro Groove and Mortise Lockcases



Stepped Router Bit for 12mm Depth Eurogroove			
Description	Color	PU	Part Number
Router bit	Steel	1	9-C9271-00-0-0
* = Color		PU = Packaging Unit	

- Additional information**
- To be used for all Secury door locks, and will provide a full depth standard size euro groove

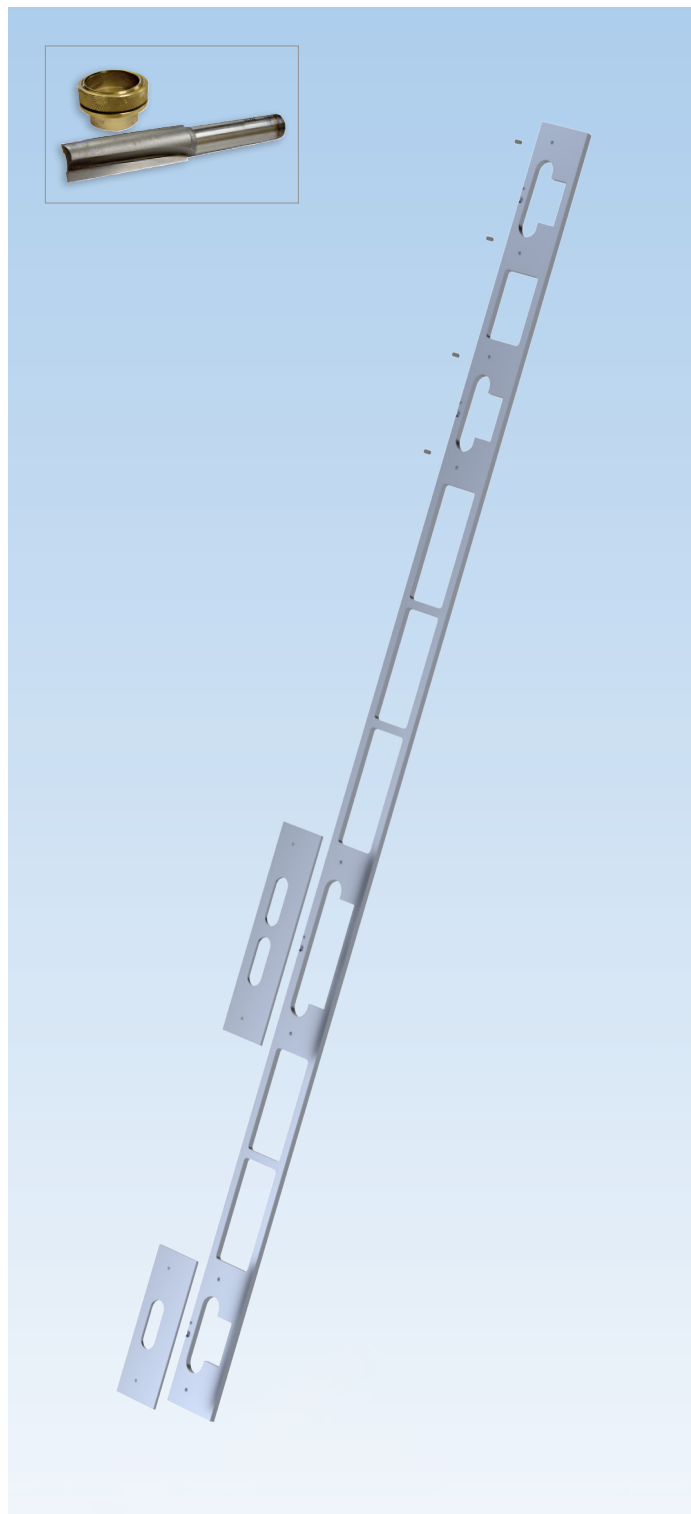


Router Bit for Pocket			
Description	Color	PU	Part Number
Router bit	Steel	1	9-C9274-00-0-0
* = Color		PU = Packaging Unit	

- Additional information**
- Plunge router bit for mortise lockcases, max. plunge depth 80mm

Strike Plates Template

for GU-SECURY SH2 and Automatic Locks



Template for Strike Plates with Lip

Description	Color	PU	Part Number
Template for 6' 8" and 8' doors	Aluminum	1	K-C8892-00-0-0
* = Color		PU = Packaging Unit	

Additional information

- For 6' 8" and 8' doors
- Use for strike plate with lip K-C4774-45 and K-C4775-57
- Only use for North American SECURY Automatic door locks
- Includes 3/4" router bit and collar
- Includes template for dust cups (9-C4765-00-0-6)

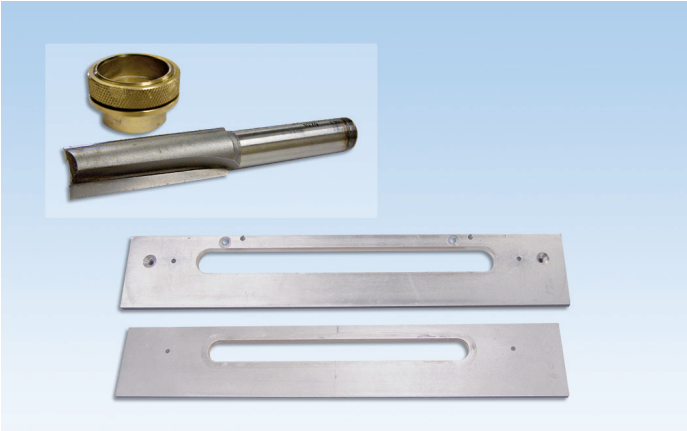
Combination for Strike Plates with Lip & Oval Strike Plate

Description	Color	PU	Part Number
Template for 6' 8" and 8' doors	Aluminum	1	K-C8893-00-0-0
* = Color		PU = Packaging Unit	

Additional information

- For 6' 8" and 8' doors
- Use for strike plate with lip K-C4774-45 and K-C4775-57 and oval strike plates K-C4770-45, K-C4770-57
- Use for SECURY SH 2 and Automatic door locks
- Includes 3/4" router bit and collar
- Includes template for dust cups
- Includes removable inserts for oval strike plate

Astragal Mortise Lock Template



Template			
Description	Color	PU	Part Number
Template AML		1	K-C8894-00-0-0
Template AMLOC		1	K-C8898-00-0-0
* = Color		PU = Packaging Unit	

- Additional information**
- Use for astragal mortise lock
 - Use for astragal mortise lock off centered
 - Includes 1/2" router bit and collar

Gripset Handle Hole Preparation Jig



Gripset Jig

Description	Color	PU	Part Number
Jig	Aluminum	1	K-C8899-00-0-0
* = Color		PU = Packaging Unit	

Additional information

- Aluminum template
- Collar: Lee valley 46J91-17(cut down) + ring nut 46J91-11
Router bit: Freud bit 12-142- 1/2" x 2" cutting depth x 5/8" double fluted

Lever Handle Hole Preparation Jig



Lever Handle Jig

Description	Color	PU	Part Number
Jig	Aluminum	1	K-C8880-00-0-0
* = Color		PU = Packaging Unit	

Additional information

- Aluminum template
- Collar: Lee valley 46J91-17(cut down) + ring nut 46J91-11
Router bit: Freud bit 12-142- ½"x 2" cutting depth x 5/8" double fluted
- Fixed backset 60mm

**Torx 15 T-Key**

Description	Color	PU	Part Number
Torx key	Steel	1	H-00346-15-0-0
* = Color		PU = Packaging Unit	

Additional information

- Used for connecting SH2 and Automatic extensions

**4mm Allen T-Key**

Description	Color	PU	Part Number
Allen key	Steel	1	H-00345-04-0-0
* = Color		PU = Packaging Unit	

Additional information

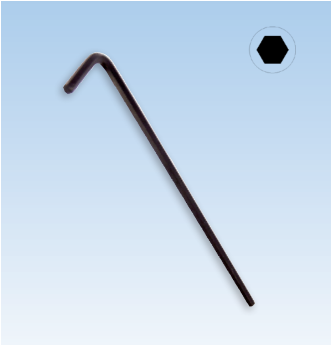
- Used for reversing Automatic latchbolts on GU-SECURY Automatic lock and extension

**Fastening Screws**

Description	Color	PU	Part Number
D1 screws	Stainless Steel	1000	9-C5362-32-0-8
* = Color		PU = Packaging Unit	

Additional information

- Stainless steel lock fastening screws
- Type D1 with self-drilling spiral point and high duplex thread with "Quadrex" socket
- Sharp tip for quick drive



Allen Key 2,5mm x 100mm

Description	Color	PU	Part Number
Allen key <i>(1 Allen key is supplied with door handle kit)</i>	Black	1	9-C0955-10-0-0
* = Color		PU = Packaging Unit	



Allen T-Key 2,5mm x 152mm

Description	Color	PU	Part Number
Allen key	Steel	1	6-C0560-20-0-0
* = Color		PU = Packaging Unit	

Additional information

- Used for connecting SH2 and Automatic extensions



Construction Handle Set

Description	Color	PU	Part Number
Construction handle	Black	25	K-C9250-25-0-6
* = Color		PU = Packaging Unit	

Additional information

- Reinforced nylon temporary door trim sets
- 8 x 8 x 90mm square spindle included
- 4.2 x 50mm screws included
- For 1 3/4" thick doors
- Locking/Unlocking from inside only



Construction Key

Description	Color	PU	Part Number
Construction key	Black	10	9-U0001-01-0-0
* = Color		PU = Packaging Unit	

Additional information

The construction key is available for those who prefer to install the decorative hardware trim and lever sets on doors after the construction has been completed. Installing the escutcheon plates and levers in the final stage of construction prevents the decorative trim from becoming scratched or damaged.

The construction key has been designed to accommodate multipoint door hardware (8mm square), tilt-turn hardware (7mm square) and lift-slide hardware (10mm square).



WINDOW TECHNOLOGY
DOOR TECHNOLOGY
AUTOMATIC ENTRANCE SYSTEMS
BUILDING MANAGEMENT SYSTEMS

QUÉBEC / MARITIMES

Ferco Ferrures de Bâtiment Inc.
2000, Rue Berlier
Laval, QC H7L 4S4
Canada

T 450 973-1437
1 800 355-8810
F 450 973-7661
ferco@ferco.ca

ONTARIO / WESTERN PROVINCES

Ferco Architectural Hardware Inc.
T 905 282-9588
1 800 668-5310
F 905 282-9915

UNITED STATES

Ferco Architectural Hardware Inc.
T 1 800 927-1097
F 1 888 454-0161

www.ferco.ca

Securing technology for you

