



WINDOW TECHNOLOGY
DOOR TECHNOLOGY
AUTOMATIC ENTRANCE SYSTEMS
BUILDING MANAGEMENT SYSTEMS



DOOR TECHNOLOGY – ORDER CATALOG | SECTION 03.5



GU-SECURY Automatic Smart Access Controlled



Securing technology for you





03.5

SECURY Automatic Access Controlled

| | |
|--|---------|
| SECURY Automatic Key-operated Door Lock..... | 03.5.3 |
| Filler pieces..... | 03.5.5 |
| Access Control Kits..... | 03.5.6 |
| Code Keypad / Fingerprint Scanner | 03.5.9 |
| A-opener Kit | 03.5.11 |
| SECUREconnect 200 | 03.5.12 |
| Faceplate for SECUREconnect..... | 03.5.13 |
| Concealed Cable Duct | 03.5.14 |
| Power Supply | 03.5.15 |
| Pull Bar Handles | 03.5.16 |
| Accesories for Pull Bar Handles | 03.5.20 |
| Smart lock | 03.5.22 |
| BELCANTO Handle and EU Rosettes | 03.5.25 |
| EURO Profile Cylinder | 03.5.27 |
| Strike Plates | 03.5.28 |
| Accessories | 03.5.31 |

The House Entrance Door Concept

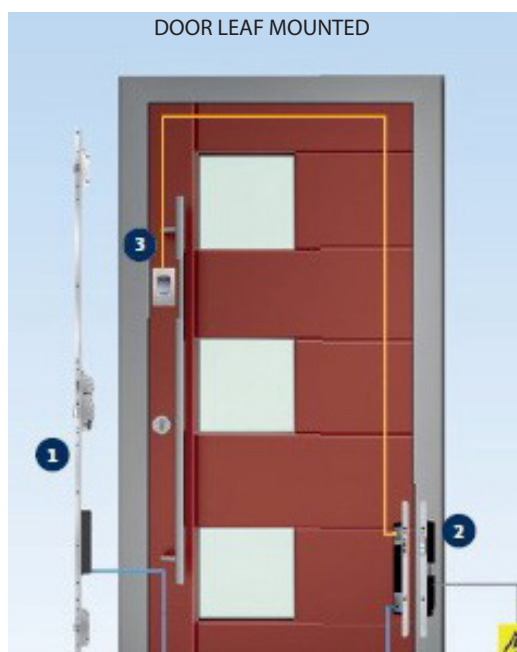
Secure – Convenient – Flexible



The single-door solution providing easy access

The GU house entrance door concept combines security and comfort

- Convenient access with biometric fingerprint recognition or individual access code. Special emphasis has been placed on simple configuration of the system
- Reading directly via the finger scanner or the code keypad, the non-networked system can function without additional computer assistance



- Control via finger scanner or code keypad
- GU-SECURY Automatoc with A-opener
- SECUREconnect 200 wireless transition

SECURY Automatic

with Latch, Deadbolt and 2 Automatic Latchbolts - Rounded Ends



Unlocked



Locked

SECURY Automatic Door Lock With Key Open and Lock Function of the Multi-point

| Description | Backset | Color | PU | Part Number |
|---------------------------|---------|-------|----|-----------------|
| Door lock for 6' 8" doors | 35mm | SS | 5 | 6-40526-01-R-8B |
| Door lock for 8' doors | 35mm | SS | 5 | 6-40526-02-R-8B |
| Door lock for 6' 8" doors | 45mm | SS | 5 | 6-40526-03-R-8B |
| Door lock for 8' doors | 45mm | SS | 5 | 6-40526-04-R-8B |
| Door lock for 6' 8" doors | 55mm | SS | 5 | 6-40526-05-R-8B |
| Door lock for 8' doors | 55mm | SS | 5 | 6-40526-06-R-8B |
| Door lock for 6' 8" doors | 65mm | SS | 5 | 6-40526-07-R-8B |
| Door lock for 8' doors | 65mm | SS | 5 | 6-40526-08-R-8B |

PU = Packaging Unit

Simply Close the Door!

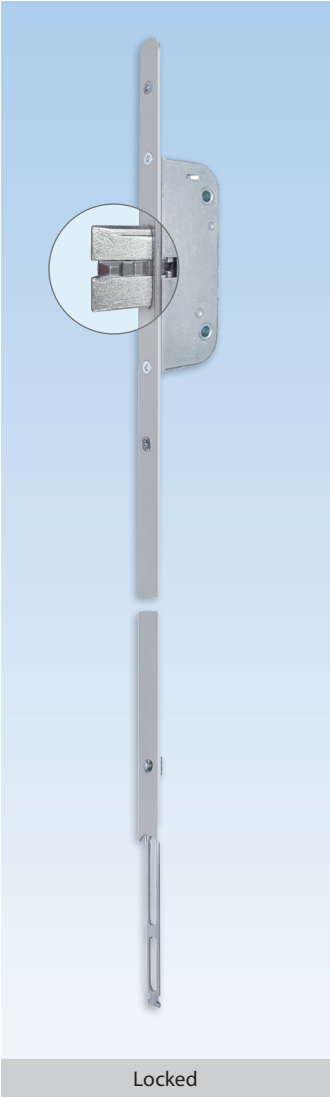
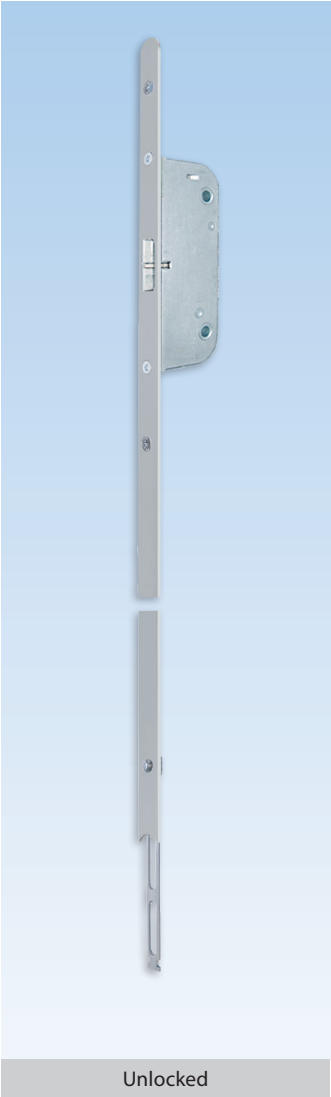
As soon as the door is pulled shut, the Automatic latchbolts instantly throw 20mm and are secured to prevent them from being forced back. By turning the key or the knob, the center deadbolt will engage and lock the top and bottom latchbolts to become a **3-deadbolt locking system**.

Additional information

- 3-point, one piece locking system for 6' 8" and 8' doors
- Heavy duty mortise construction with reinforced lever return spring system
- Locking by PZ cylinder with 180° turn of key or thumb-turn
- Unlocking with 180° turn to retract the deadbolt and another 180° turn to retract the latches
- No lifting of handle to engage locking points
- Top and bottom Automatic latchbolt projection from 10 to 20mm:
 - Provides security
 - Protects the door
- 3/4" (20mm) throw on deadbolt
- Non handed, latch easily reversible
- 8mm square spindle
- 92mm centres (spindle to cylinder)
- 16mm stainless steel faceplate with radius ends for easy installation and cleaner look
- Same hardware groove detail throughout our entire door lock program (jig, router base and bits available)
- Extension with additional lock point is available for doors taller than 8' (6-33479-04-0-8B)
- 360° turn with profile cylinders

Automatic Extension

with Additional Latchbolt - Radius End



Extension with Additional Latchbolt

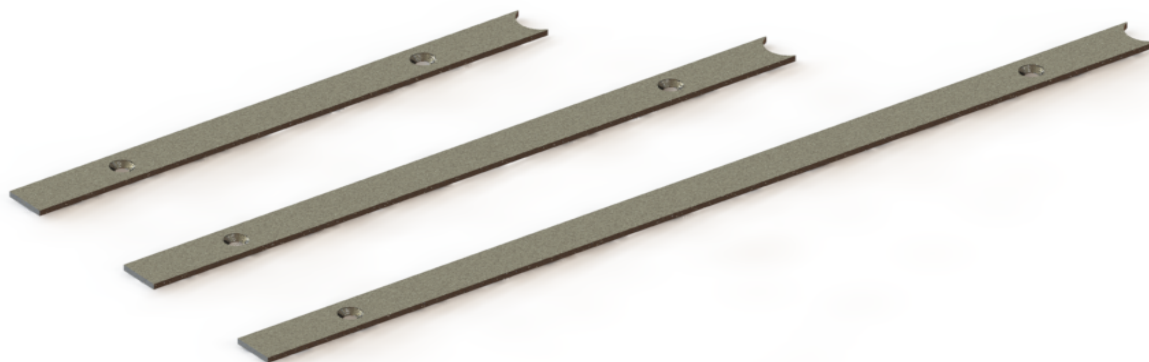
| Description | Color | PU | Part Number |
|-----------------------------------|-----------------|----|-----------------|
| 525mm extension with rounded end | Stainless Steel | 5 | 6-33479-04-0-8B |
| 800mm extension with rounded end | Stainless Steel | 1 | 6-C5078-00-0-8B |
| 1050mm extension with rounded end | Stainless Steel | 1 | 6-C5062-10-0-8B |
| 1325mm extension with rounded end | Stainless Steel | 1 | 6-C5062-13-0-8B |
| PU = Packaging Unit | | | |

Additional information

- Tapered latch always engaging in strike plate
- 16mm stainless steel faceplate with radius end for easy installation and cleaner look
- Additional locking point for doors taller than 8'
- To be used with GU-SECURY Automatic door locks

Filler pieces

Round to square



Filler Pieces Round to square

| Description | PU | Part Number |
|-------------------------------|----|-----------------|
| Filler piece 193,7mm x 16 mm | 1 | 9-C4340-19-0-8B |
| Filler piece 245,9 mm x 16 mm | 1 | 9-C4342-24-0-8B |
| Filler piece 342,3 mm x 16 mm | 1 | 9-C4342-34-0-8B |
| PU = Packaging Unit | | |

Additional information

- Made of stainless steel
- To be used with radius end locks and extensions

Formulas to select filler length:

- Bottom:
L = Handle height - 720,7mm
- Top 1590mm lock:
L = Door height - handle height - extension(s) length - 871,7mm
- Top 1900mm lock:
L = Door height - handle height - extension(s) length - 1181,7mm

Access Control Kits

DOOR LEAF MOUNTED



DOOR LEAF MOUNTED Code Keypad Kit

| Description | PU | Part Number |
|---------------------|----|----------------|
| Code keypad kit | 1 | K-C1440-51-0-0 |
| PU = Packaging Unit | | |

Additional information

- Package contains:
 - Code keypad (K-C5560-20-4-8)
 - A-opener (K-C8153-01-0-0)
 - SECURE Connect 200 (K-C5560-20-4-6)
- SECURE Connect faceplates must be bought separately (9-C4793-0X-0-8B)
- Power supply can be bought separately (6-C9405-00-0-00)
- Refer to wire Diagram - Option 3



DOOR LEAF MOUNTED Fingerprint Scanner Kit

| Description | PU | Part Number |
|-------------------------|----|----------------|
| Fingerprint scanner kit | 1 | K-C1440-01-0-0 |
| PU = Packaging Unit | | |

Additional information

- Package contains:
 - Fingerprint scanner (K-C5560-23-4-8)
 - A-opener (K-C8153-01-0-0)
 - SECURE Connect 200 (K-C5560-20-4-6)
- SECURE Connect faceplates must be bought separately (9-C4793-0X-0-8B)
- Power supply can be bought separately (6-C9405-00-0-00)
- Refer to wire Diagram - Option 3

* Do not install the SECUREconnect if conditions require a higher protection class than IP 40



FRAME MOUNTED Code Keypad Kit

| Description | PU | Part Number |
|-------------------------------|----|----------------|
| Code keypad kit | 1 | K-C1440-51-0-0 |
| Cable relay -6 (One required) | 1 | B-55600-21-4-6 |
| PU = Packaging Unit | | |

Additional information

- Package contains:
 - Code keypad (K-C5560-20-4-8)
 - A-opener (K-C8153-01-0-0)
 - SECURE Connect 200 (K-C5560-20-4-6)
- One cable relay -6 (B-55600-21-4-6) must be bought separately
- SECURE Connect faceplates must be bought separately (9-C4793-0X-0-8B)
- Power supply can be bought separately (6-C9405-00-0-00)
- Refer to wire Diagram - Option 6



| FRAME MOUNTED Fingerprint Scanner Kit | | |
|---------------------------------------|----|----------------|
| Description | PU | Part Number |
| Fingerprint Scanner Kit | 1 | K-C1440-01-0-0 |
| Cable relay -6 (One required) | 1 | B-55600-21-4-6 |
| PU = Packaging Unit | | |

Additional information

- Package contains:
 - Fingerprint scanner (K-C5560-23-4-8)
 - A-opener (K-C8153-01-0-0)
 - SECURE Connect 200 (K-C5560-20-4-6)
- One cable relay -6 (B-55600-21-4-6) must be bought separately
- SECURE Connect faceplates must be bought separately (9-C4793-0X-0-8B)
- Power supply can be bought separately (6-C9405-00-0-00)
- Refer to wire Diagram - Option 6

* Do not install the SECUREconnect if conditions require a higher protection class than IP 40

Access Control Kits

WALL MOUNTED



WALL MOUNTED Code Keypad Kit

| Description | PU | Part Number |
|---------------------|----|----------------|
| Code keypad kit | 1 | K-C1440-73-0-0 |
| PU = Packaging Unit | | |

Additional information

- Package contains:
 - Code keypad (K-C5560-20-1-8)
 - A-opener (K-C8153-01-0-0)
 - SECURE Connect 200 (K-C5560-20-4-6)
- Relay unit included (Not show on image)
- SECURE Connect faceplates must be bought separately (9-C4793-0X-0-8B)
- Power supply can be bought separately (6-C9405-00-0-00)
- Refer to wire Diagram - Option 4



WALL MOUNTED Fingerprint Scanner Kit

| Description | PU | Part Number |
|-------------------------|----|----------------|
| Fingerprint scanner kit | 1 | K-C1440-61-0-0 |
| PU = Packaging Unit | | |

Additional information

- Package contains:
 - Fingerprint scanner (K-C5560-23-1-8)
 - A-opener (K-C8153-01-0-0)
 - SECURE Connect 200 (K-C5560-20-4-6)
- Relay unit included (Not show on image)
- SECURE Connect faceplates must be bought separately (9-C4793-0X-0-8B)
- Power supply can be bought separately (6-C9405-00-0-00)
- Refer to wire Diagram - Option 4

* Do not install the SECUREconnect if conditions require a higher protection class than IP 40

SEPARATE COMPONENTS

Code Keypad/Fingerprint Scanner



Door leaf / Frame mounted Code Keypad

| Description | Color | PU | Part Number |
|---------------------|-----------------|----|----------------|
| Code keypad | Stainless steel | 1 | K-C5560-20-4-8 |
| PU = Packaging Unit | | | |

Additional information

- High-quality housing
 - cast and waterproof for outdoor use
- Stainless steel keyboard and faceplate
- Intelligent and time-controlled locking keyboard mechanisms to combat manipulation
- Encrypted communication
- Optimum installation height of 1.2 m upwards (for child safety)
- Can only be used in combination with SECURE Connect



Door leaf / Frame mounted Fingerprint Scanner

| Description | Color | PU | Part Number |
|---------------------|-----------------|----|----------------|
| Fingerprint scanner | Stainless steel | 1 | K-C5560-23-4-8 |
| PU = Packaging Unit | | | |

Additional information

- High-quality housing
 - cast and waterproof for outdoor use
- Stainless steel faceplate
- False rejection rate minimized to nearly “zero”
- Highest biometric security standards
 - programming without any code
- Self-learning fingerprint
- Optimum installation height of 1.2 m upwards (for child safety)
- Can only be used in combination with SECURE Connect

SEPARATE COMPONENTS

Code Keypad/Fingerprint Scanner



Wall mounted Code Keypad

| Description | Color | PU | Part Number |
|---------------------|-----------------|----|----------------|
| Code keypad | Stainless steel | 1 | K-C5560-20-1-8 |
| PU = Packaging Unit | | | |

Additional information

- High-quality housing
 - cast and waterproof for outdoor use
- Stainless steel keyboard and faceplate
- Intelligent and time-controlled locking mechanisms to combat manipulation
- Encrypted communication
- Optimum installation height of 1.2 m upwards (for child safety)
- Can only be used in combination with SECURE Connect
- Relay unit included (Not show on image)



Wall mounted Fingerprint Scanner

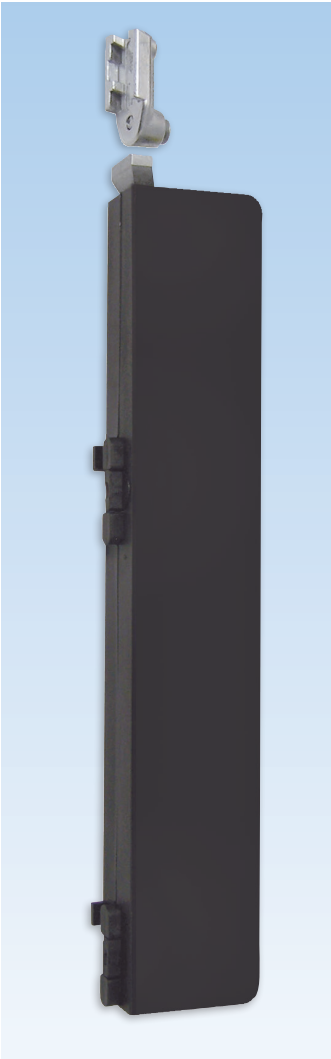
| Description | Color | PU | Part Number |
|---------------------|-----------------|----|----------------|
| Fingerprint scanner | Stainless steel | 1 | K-C5560-23-1-8 |
| PU = Packaging Unit | | | |

Additional information

- High-quality housing
 - cast and waterproof for outdoor use
- Stainless steel faceplate
- False rejection rate minimized to nearly “zero”
- Highest biometric security standards
 - programming without any code
- Self-learning fingerprint
- Optimum installation height of 1.2 m upwards (for child safety)
- Can only be used in combination with SECURE Connect
- Relay unit included (Not show on image)

GU-SECURY A-opener

Opening Motor



Mounted on gear

A-opener Kit

| Description | Color | PU | Part Number |
|-------------------------------------|-------|----|----------------|
| A-opener kit with connecting cables | Black | 1 | K-C8153-01-0-0 |
| PU = Packaging Unit | | | |

Additional information

- The GU-SECURY Automatic lock with motorized A-opener retracts the latches
- Once the door panel is closed, it can be opened from the outside or inside via an impulse transmitter. That will signal the A-opener to retract the latches
- If the deadbolt is engaged the system is inoperative and requires a key from the exterior or thumbturn to unlock

SECURE Connect 200

Wireless Power and Data Transmission



SECUREconnect 200 Unit

| Description | Color | PU | Part Number |
|---------------------|-------|----|----------------|
| SECUREconnect 200 | Black | 1 | K-C5560-20-4-6 |
| PU = Packaging Unit | | | |

The intelligent solution for the door system

More security and convenience. SECURE Connect 200 for wireless power and data transmission between frame and door leaf.

Additional information

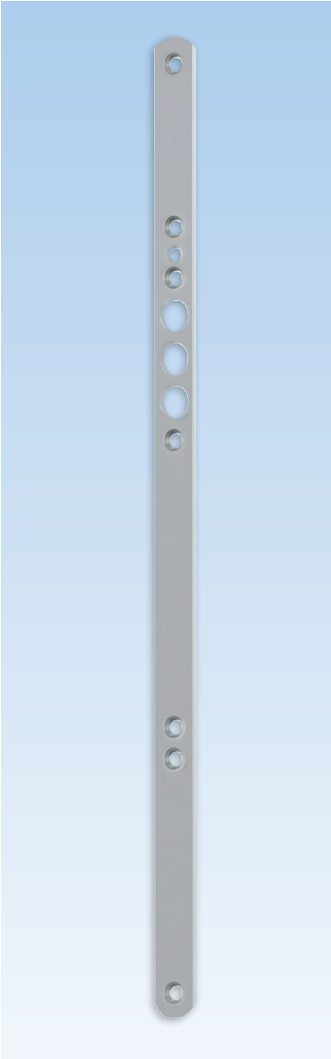
- Easy installation in timber, PVC and metal door systems
- Short-circuit proof power transmission to the door leaf
- Tamper protection via encoded telegram interface
- Faceplates must be bought separately (9-C4793-0X-0-8B)



Power and data transmission

* Do not install the SECUREconnect if conditions require a higher protection class than IP 40

Faceplate
for SECURE Connect Unit

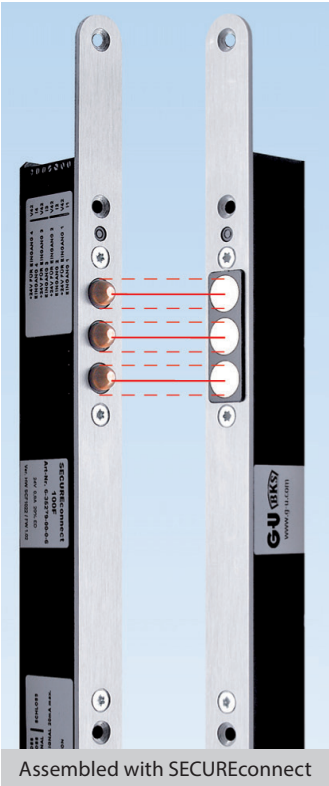


Faceplate

| Description | Color | PU | Part Number |
|--|-----------------|----|-----------------|
| Faceplate 16mm wide with rounded ends (two required) | Stainless Steel | 1 | 9-C4793-01-0-8B |
| Faceplate 20mm wide with rounded ends (two required) | Stainless Steel | 1 | 9-C4793-03-0-8B |
| PU = Packaging Unit | | | |

Additional information

- 16 or 20mm stainless steel faceplate with radius ends for easy installation and cleaner look
- Mounting screws included with Secure Connect 200 unit (K-C5560-20-4-6)
- Fastening screws not included (9-C5362-32-0-8)



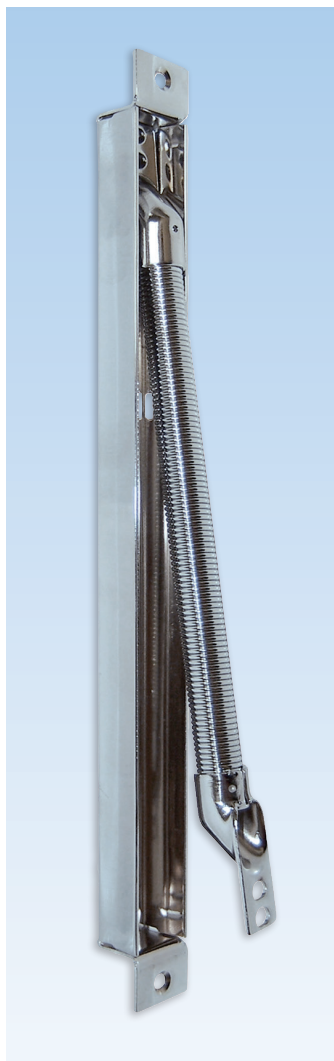
Assembled with SECUREconnect



Mounted on door

Cable Duct

Concealed Cable Transition

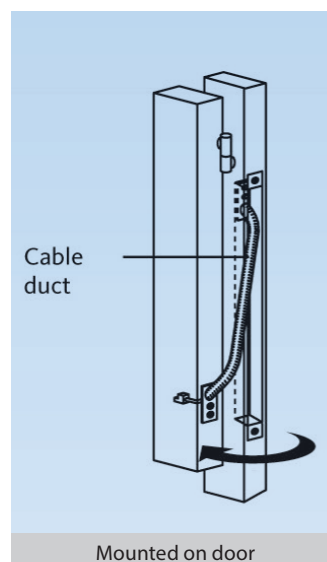


Concealed Cable Duct

| Description | Color | PU | Part Number |
|---------------------|-------|----|----------------|
| Cable duct | Zinc | 1 | 6-29854-00-0-0 |
| PU = Packaging Unit | | | |

Additional information

- Installation screws are included





Power Supply 24V DC

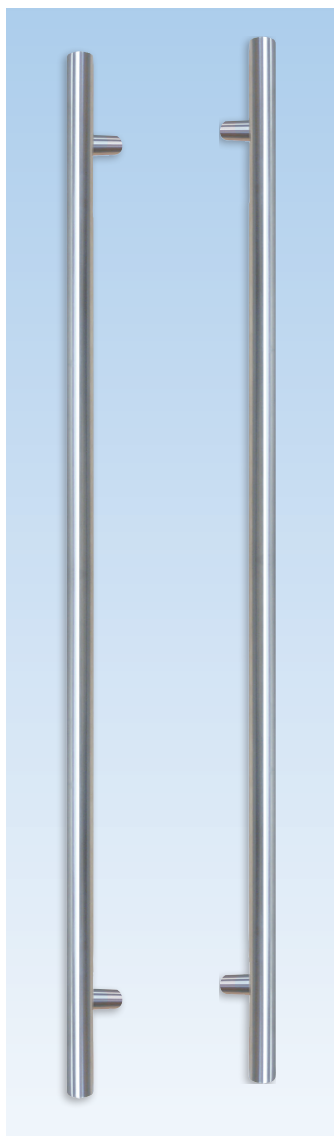
| Description | Color | PU | Part Number |
|---------------------|-------|----|----------------|
| | Black | 1 | 6-C9405-00-0-0 |
| PU = Packaging Unit | | | |

Additional information

- Plug-in wall adapter
- Input: 100-240 VAC @ 50/60 Hz
- Output: 24V DC, 2A, 48W
- Screw terminals output

Push-Pull Handle

Contemporary Round



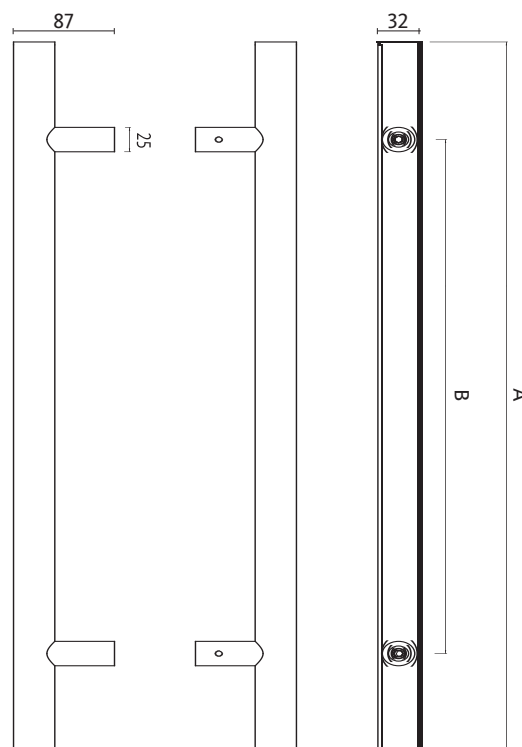
Rounded Straight Handle

| Description | PU | Part Number |
|--|----|----------------|
| Double pull bars Length (A) = 1200mm Fixing centers (B) = 1000mm | 1 | K-C0341-12-P-* |
| Double pull bars Length (A) = 1800mm Fixing centers (B) = 1400mm | 1 | K-C0341-18-P-* |
| 8B = Stainless Steel, 6V = Matte Black * = Color PU = Packaging Unit | | |



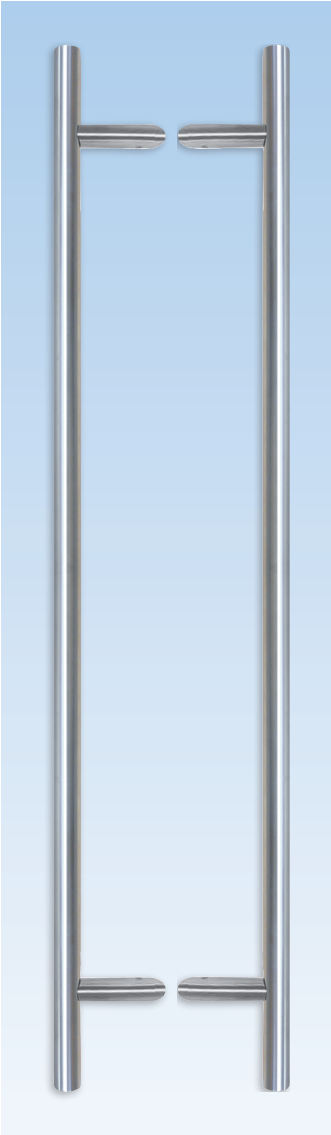
Additional information

- Made of stainless steel 304
- Fastening kit included with M8 screws for 1 3/4" up to 3 3/4" doors
- Bushing included in the kit



Push-Pull Angle Handle

Contemporary Round



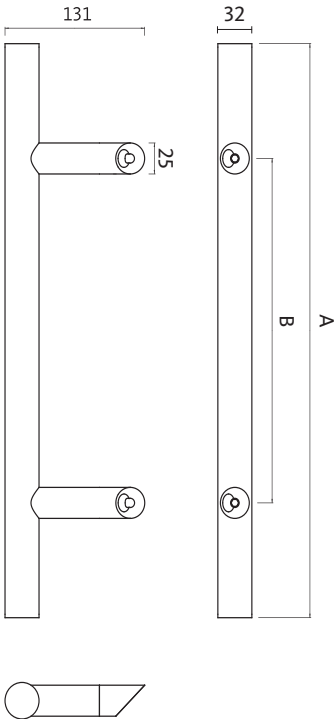
Rounded 45° Offset Handles

| Description | PU | Part Number |
|--|----|----------------|
| Double pull bars Length (A) = 1200mm Fixing centers (B) = 1000mm | 1 | K-C0343-12-P-* |
| Double pull bars Length (A) = 1800mm Fixing centers (B) = 1400mm | 1 | K-C0343-18-P-* |
| 8B = Stainless Steel, 6V = Matte Black * = Color PU = Packaging Unit | | |



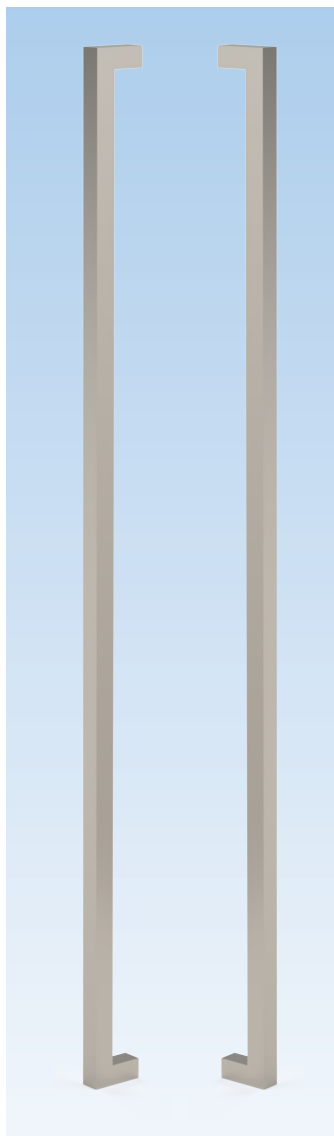
Additional information

- Made of stainless steel 304
- Gives more clearance to the door jamb
- Fastening kit included with M8 screws for 1 3/4" up to 3 3/4" doors
- Bushing included in the kit



Push-Pull Handle

Contemporary Square



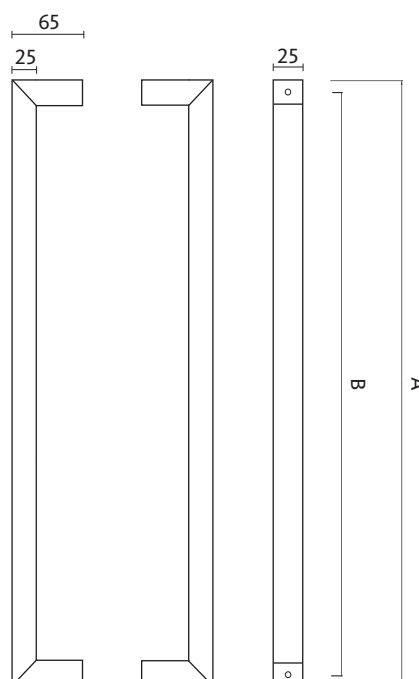
Square Straight Handle

| Description | PU | Part Number |
|--|----|----------------|
| Double pull bars Length (A) = 1200mm Fixing centers (B) = 1175mm | 1 | K-C0346-12-P-* |
| Double pull bars Length (A) = 1800mm Fixing centers (B) = 1775mm | 1 | K-C0346-18-P-* |
| 8B = Stainless Steel, 6V = Matte Black * = Color PU = Packaging Unit | | |



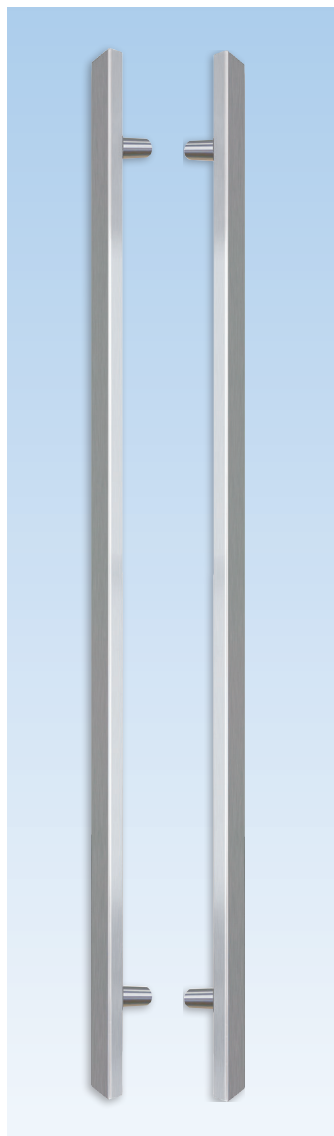
Additional information

- Made of stainless steel 316
- Fastening kit included with M8 screws for 1 3/4" up to 3 3/4" doors
- Bushing included in the kit



Push-Pull Angle Handle

Contemporary Rectangular



Rectangular Straight Handle

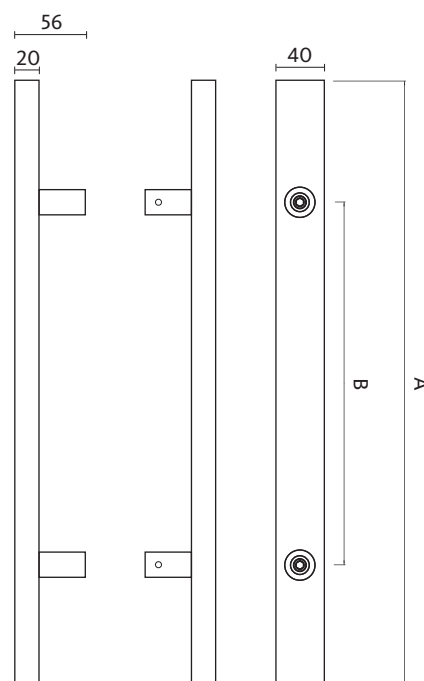
| Description | PU | Part Number |
|--|---------------------|----------------|
| Double pull bars Length (A) = 1200mm Fixing centers (B) = 1000mm | 1 | K-C0350-12-P-6 |
| 6 = Black | PU = Packaging Unit | |

6



Additional information

- Made of stainless steel
- Fastening kit included with M8 screws for 1 3/4" and 2 1/4" doors



Accessories

for Pull Bars



Kit of Supporting Plate for Pull Bars

| Description | Color | PU | Part Number |
|--|-----------------|----|-----------------|
| Kit of 4 round supporting plates for steel doors | Stainless Steel | 1 | K-C0960-00-0-8B |
| Kit of 4 round supporting plates for steel doors | Black | 1 | K-C0960-00-0-6 |
| PU = Packaging Unit | | | |



PEEK Cream Cleaner

| Description | PU | Part Number |
|---------------------|----|----------------|
| 100mL tube | 1 | 9-C9030-00-0-0 |
| PU = Packaging Unit | | |

Additional information

- Cleans, polishes and protects the surface
- Leaves behind a light and invisible protective coating



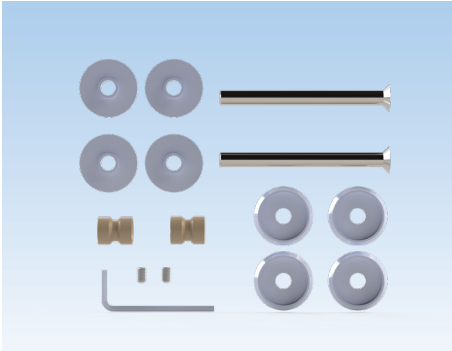
Kit of Roller Latch

| Description | Color | PU | Part Number |
|-------------------------|-------|----|----------------|
| Adjustable roller latch | Zinc | 1 | 6-C0522-00-0-1 |
| Adjustable roller latch | Black | 1 | 6-C0522-00-0-6 |
| PU = Packaging Unit | | | |

Additional information

- Made of brass, zinc plated
- Adjustment for door gap
- Adjustment spring tension on roller
- Strike plate and 4 screws (#8 x 25.4mm) included for 1 3/4" doors

Accessories
for Pull Bars

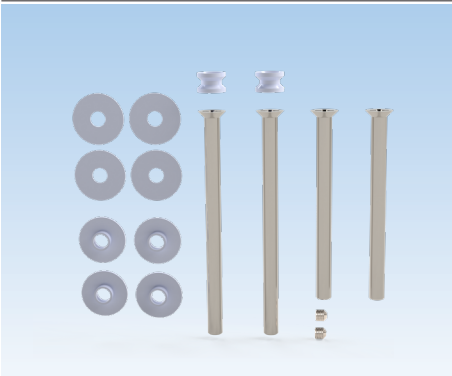


Replacement parts for Rectangular Handles

| Description | Color | PU | Part Number |
|-------------------------|-----------------|----|-----------------|
| Kit of replacement part | Stainless Steel | 1 | 6-C0535-00-0-8B |
| PU = Packaging Unit | | | |

Additional information

- Use with K-C0350-12-P-6



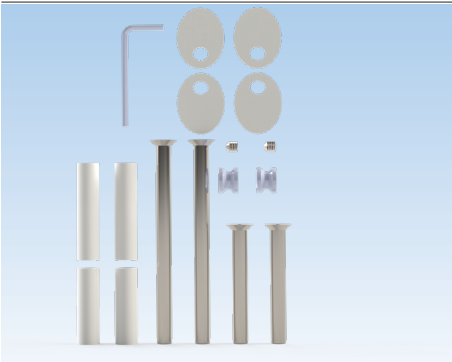
| Replacement parts for Rounded Straight Handles | | | |
|--|-----------------|---------------------|----------------|
| Description | Color | PU | Part Number |
| Kit of replacement part | Stainless Steel | 1 | K-C0341-KT-0-* |
| * = Color | | PU = Packaging Unit | |

8B = Stainless Steel, 6V = Matte Black



Additional information

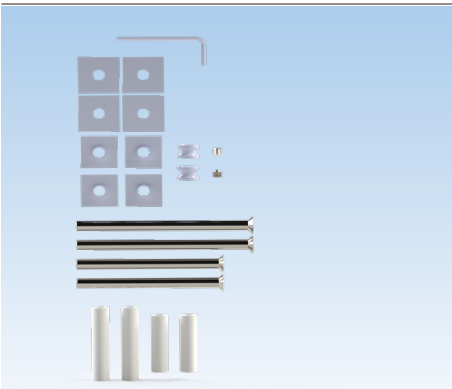
- Use with K-C0341-*



| Replacement parts for Rounded 45 deg Handles | | | |
|--|-----------------|----|-----------------|
| Description | Color | PU | Part Number |
| Kit of replacement part | Stainless Steel | 1 | K-C0343-KT-0-8B |
| PU = Packaging Unit | | | |

Additional information

- Use with K-C0343-* finishing colors 8B & 6V



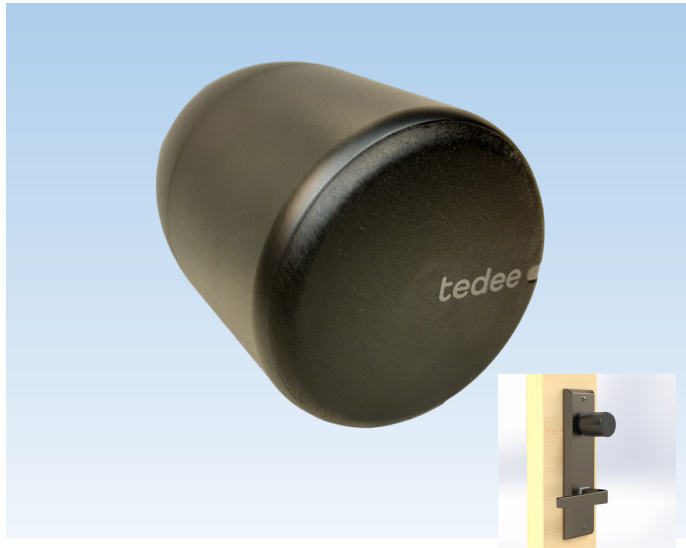
| Replacement parts for square Handles | | | |
|--------------------------------------|-----------------|---------------------|----------------|
| Description | Color | PU | Part Number |
| Kit of replacement part | Stainless Steel | 1 | K-C0346-KT-0-* |
| * = Color | | PU = Packaging Unit | |

8B = Stainless Steel, 6V = Matte Black



Additional information

- Use with K-C0346-*

**Smart lock**

| Description | PU | Part Number |
|-----------------------|----|----------------|
| Tedee PRO Smart Lock | 1 | 6-C9370-00-0-* |
| PU = Packaging Unit | | |
| 1 = Silver, 6 = Black | | |

**Additional information**

- Rechargeable 3000 mAh LiPo battery (included)
- Bluetooth BLE 5.0 2,4 GHz (Tedee app) and Internet connection
- Security TLS 1.3
- Compatible with Berkeley and Berlin handles

**Tedee Smart lock remote access (Wi-Fi)**

| Description | PU | Part Number |
|---------------------|----|----------------|
| Tedee Smart Bridge | 1 | 6-C9382-00-0-7 |
| PU = Packaging Unit | | |

Additional information

- Dimensions 63.5 x 63.5 x 28 mm / Weight 51.6g
- Power connection socket plug (included) or micro-USB (cable not included)
- Wi-Fi 2.4 GHz and 5.0 GHz
- Bluetooth 5.0 2.4 GHz
- Security TLS 1.3
- Compatible with Tedee smart lock 6-C9370-00-0-X and Bluetooth Keypad 6-C9387-00-0-6
- Works with smart home systems
- Up to 5 Smart Locks can be controlled (Bluetooth Range)

**Bluetooth keypad 2.0**

| Description | PU | Part Number |
|--|----|----------------|
| Tedee Keypad 2.0 | 1 | 6-C9387-01-0-* |
| 6 = Black, 7 = White * = Color PU = Packaging Unit | | |

**Additional information**

- 3 X AAA batteries (included)
- Bluetooth 5.0 2,4 GHz
- Security TLS 1.3
- Up to 100 unique PINs
- Backlight buttons, Sound signal, Bell button and more
- IP65 protection class
- Compatible with Tedee smart lock 6-9370-00-0-X and bridge 6-C9382-00-0-7
- Finger print activated

**Tedee Door sensor**

| Description | UE | Part Number |
|---------------------|----|----------------|
| Tedee Door Sensor | 1 | 6-C9390-00-0-7 |
| PU = Packaging Unit | | |

Additional information

- Sensor Dimensions 30 × 64 × 14 mm
- Magnet Dimensions 17 × 64 × 7 mm
- Power Supply CR2032 battery
- 2.4 GHz to 2.483 GHz (Max output power: 8 dBm)
- 5°C to 50°C (indoor only)

**Micro USB Cable**

| Description | UE | Part Number |
|--------------------------------|----|----------------|
| Micro USB Cable for TEDEE Lock | 1 | 6-C9377-00-0-0 |
| PU = Packaging Unit | | |



Smart lock

| Description | PU | Part Number |
|---------------------|----|----------------|
| Universal module V3 | 1 | 6-C9403-00-0-0 |
| PU = Packaging Unit | | |

Additional information

- 35mm x 40mm x 15mm, 14 grams
- Input 24V DC, 100mA
- Bluetooth 4.2 (Danalock app)
- Z-Wave (Automation hub)
- 256bit AES encryption level
- Compatible with A-opener and access controlled systems
- Refer to wire Diagram



| Bluetooth keypad | | |
|-------------------------------|----|----------------|
| Description | PU | Part Number |
| Danapad V3 | 1 | 6-C9407-00-0-X |
| * = Color PU = Packaging Unit | | |
| 1 = Silver, 6 = Black | | |

**Additional information**

- 4 X AAA batteries (included)
- Bluetooth 4.2
- 256bit AES encryption level
- Compatible with smart lock (Danalock V3) and Universal Module



| Danalock Remote Access | | |
|------------------------|----|----------------|
| Description | PU | Part Number |
| Danabridge V3 | 1 | 6-C9402-00-0-0 |
| PU = Packaging Unit | | |

Additional information

- 53 mm x 53 mm x 32 mm / Weighs 36 g
- USB power supply
- Add remote access to smart locks (Danalock or Universal Module)
- 2 Smart locks can be controlled with one Danabridge (via Bluetooth 4.2)
- Communication with Wi-Fi 802.11b/g/n



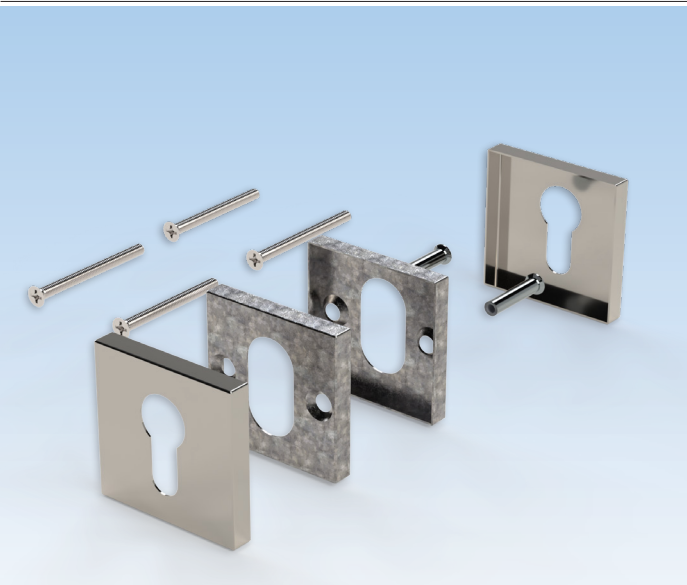
Round Rosettes

| Description | PU | Part Number |
|---------------------------------|----|---------------------|
| Rosettes for profile cylinder | 1 | K-C9075-00-0-* |
| * = Color | | PU = Packaging Unit |
| 8B = Stainless Steel, 6 = Black | | |



Additional information

- Rosettes made of stainless steel
- Fastening kit included for 1 3/4" and 2 1/4" doors
- Compatible with smart lock (Danalock V3)
- For 1 3/4" doors : use 64mm cylinder (6-U7401-64-0-*)
- For 2 1/4" doors : use 80mm cylinder (6-U7401-80-0-*)
- For 2 3/4" doors : cut to length 70mm screws (9-C0570-70-0-1) and 90mm cylinder (6-U7401-90-0-*)
- External Ø 53 mm x 7.5 mm



Square Rosettes

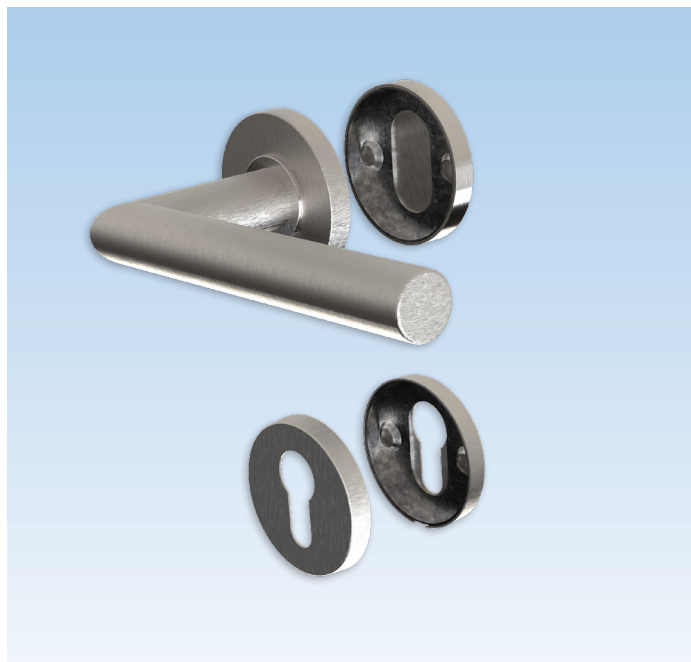
| Description | PU | Part Number |
|---------------------------------|----|---------------------|
| Rosettes for profile cylinder | 1 | K-C9077-00-0-* |
| * = Color | | PU = Packaging Unit |
| 8B = Stainless Steel, 6 = Black | | |



Additional information

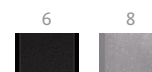
- Rosettes made of stainless steel
- Fastening kit included for 1 3/4" and 2 1/4" doors
- Compatible with smart lock (Danalock V3)
- For 1 3/4" doors : use 64mm cylinder (6-U7401-64-0-*)
- For 2 1/4" doors : use 80mm cylinder (6-U7401-80-0-*)
- For 2 3/4" doors : cut to length 70mm screws (9-C0570-70-0-1) and 90mm cylinder (6-U7401-90-0-*)
- External Ø 53 mm x 7.5 mm

BELCANTO Handles & PZ Rosettes



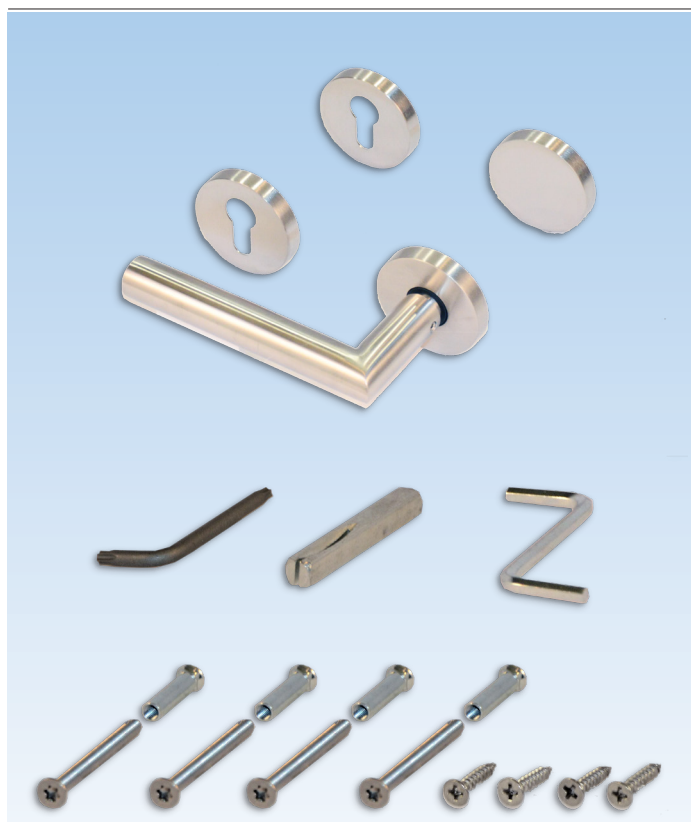
BELCANTO Half Handle Set and Rosettes

| Description | PU | Part Number |
|--|----|------------------|
| Kit of inside handle with rosette and PZ rosette with outside blind rosette and PZ rosette | 1 | K-C9073-00-R/L-* |
| 8 = Stainless Steel, 6 = Black * = Color PU = Packaging Unit | | |



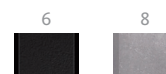
Additional information

- Fastening kit included for 1 3/4" and 2 1/4" doors
- 8mm square spindle x 70 mm
- For 1 3/4" doors : use 64mm cylinder (6-U7401-64-0-*)
- For 2 1/4" doors : use 80mm cylinder (6-U7401-80-0-*)
- For 2 3/4" doors : cut to length 70mm screws (9-C0570-70-0-1) and 90mm cylinder (6-U7401-90-0-*)
- Ø External 53 mm x 7.5 mm



BELCANTO BKS Half Handle Set and Rosettes

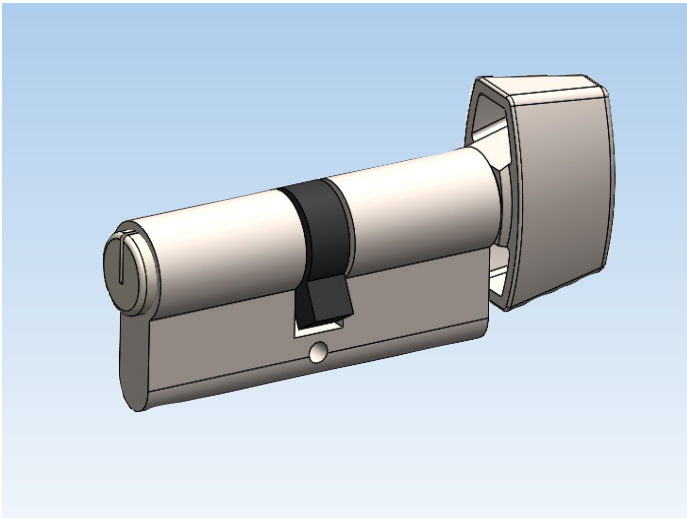
| Description | PU | Part Number |
|--|----|----------------|
| Kit of inside handle with rosette and PZ rosette with outside blind rosette and PZ rosette | 1 | K-C9072-00-0-* |
| 8 = Stainless Steel, 6 = Black * = Color PU = Packaging Unit | | |



Additional information

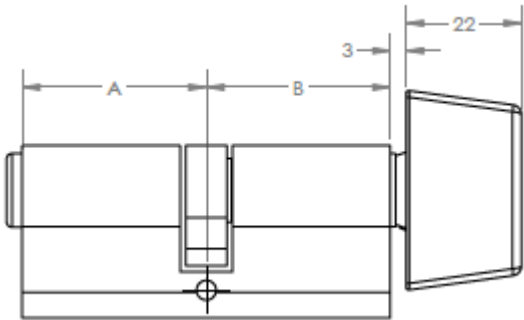
- Handles and rosettes made of stainless steel
- Fastening kit included for 1 3/4" and 2 1/4" doors
- Fixed lever spring loaded - can't be lifted
- 8mm square spindle x 110 mm included
- 8mm square spindle x 115 mm included
- Concealed fixing screws
- Compatible with smart lock (Danalock V3)
- For doors thicker than 2 1/4" up to 3" : cut to length 70mm screws (9-C0570-70-0-1) and 130mm spindle (9-U8100-30-0-8)
- For 1 3/4" doors : use 70mm cylinder (6-U7401-70-0-*)
- For 2 1/4" doors : use 80mm cylinder (6-U7401-80-0-*)
- External Ø 55 mm x 9 mm

Euro Profile Cylinder



Profile cylinders

| Description | A | B | PU | Part Number |
|---------------------------------------|----|----|---------------------|-----------------|
| 32/32 Cylinder | 32 | 32 | 1 | 6-U7401-64-0-* |
| 32/32 Cylinder (Matte Black) | 32 | 32 | 1 | 6-U7401-64-0-6V |
| 35/35 Cylinder | 35 | 35 | 1 | 6-U7401-70-0-* |
| 40/40 Cylinder | 40 | 40 | 1 | 6-U7401-80-0-* |
| 40/40 Cylinder (Matte Black) | 40 | 40 | 1 | 6-U7401-80-0-6V |
| 45/45 Cylinder | 45 | 45 | 1 | 6-U7401-90-0-* |
| 50/50 Cylinder | 50 | 50 | 1 | 6-U7401-00-0-* |
| 10/40 Cylinder Thumbturn | 10 | 40 | 1 | 6-U7402-40-0-11 |
| 10/45 Cylinder Thumbturn | 10 | 45 | 1 | 6-U7402-45-0-11 |
| Rekeying kit for Ferco Schlage keyway | | | 1 | K-C4332-00-0-0 |
| * = Color 11 = Satin Nickel, 6 =Black | | | PU = Packaging Unit | |

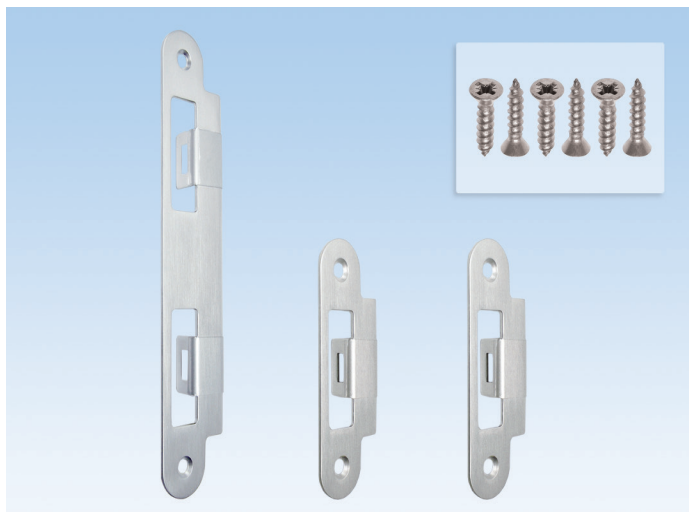


Additional information

- Refer to rosette to select cylinder length
- For keyed alike profile cylinder add 9-C9995-00-0-0
- 3 keys included
- 70mm screw for backset up to 65mm (Cut to length)
- Schlage Keyway type "C" 5 pins

Strike Plates

Bag of Strike Plates



Bag of Strike Plates

| Description | Color | PU | Part Number |
|--|--------------|----|----------------|
| Bag of strike plates for 45mm (1 3/4") thick doors | Satin Nickel | 50 | K-C4774-45-0-* |
| Bag of strike plates for 57mm (2 1/4") thick doors | Satin Nickel | 50 | K-C4775-57-0-* |

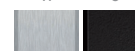
11 = Satin Nickel, 6 = Black

* = Color

PU = Packaging Unit

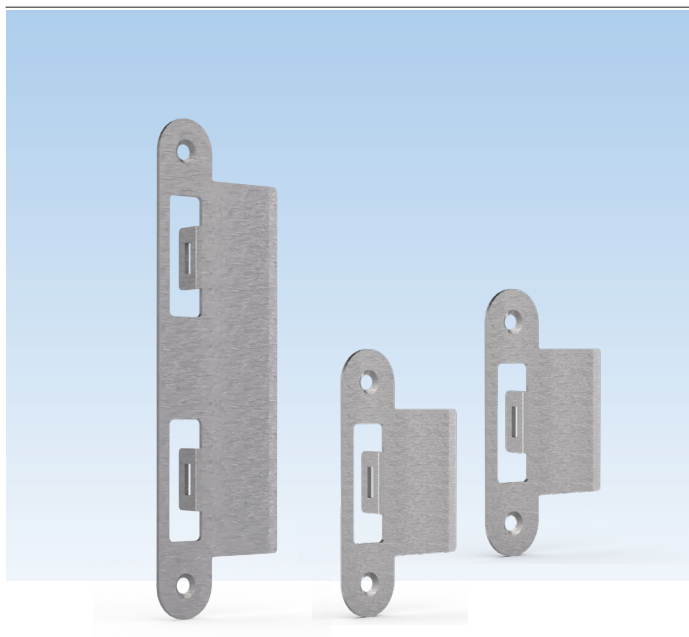
11

6



Additional information

- Made of stainless steel
- Bag contains:
 - 1 middle strike plate
 - 2 top and bottom strike plates
 - 6 screws
- Non-handed
- With clear protective film
- Available in handle matching finishes
- For SECURY Automatic door locks



Bag of Strike Plates

| Description | PU | Part Number |
|--|----|----------------|
| Bag of strike plates for 76mm (3") thick doors | 1 | K-C4777-59-0-* |

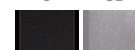
* = Color

PU = Packaging Unit

8B = Stainless Steel

6

8B

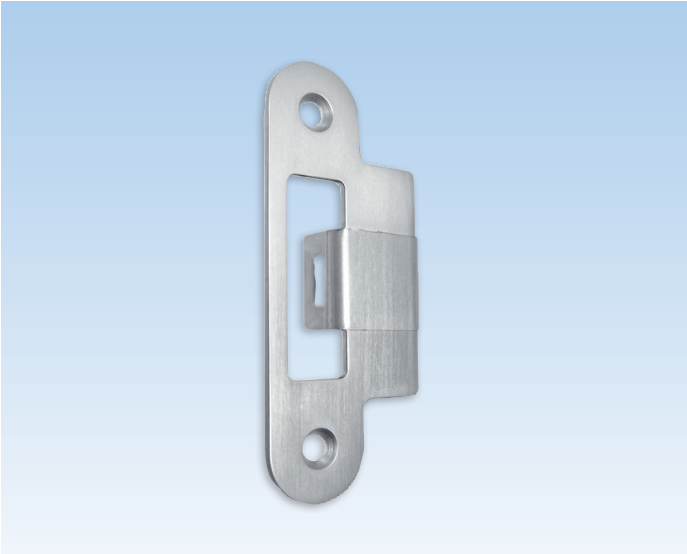


Additional information

- Made in stainless steel
- Bag contains:
 - 1 middle striker with extended lip
 - 2 top and bottom strikers with extended lip
- Non-handed
- For use with GU-SECURY Automatic door locks

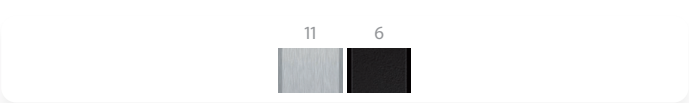
Strike Plates

for Door Lock



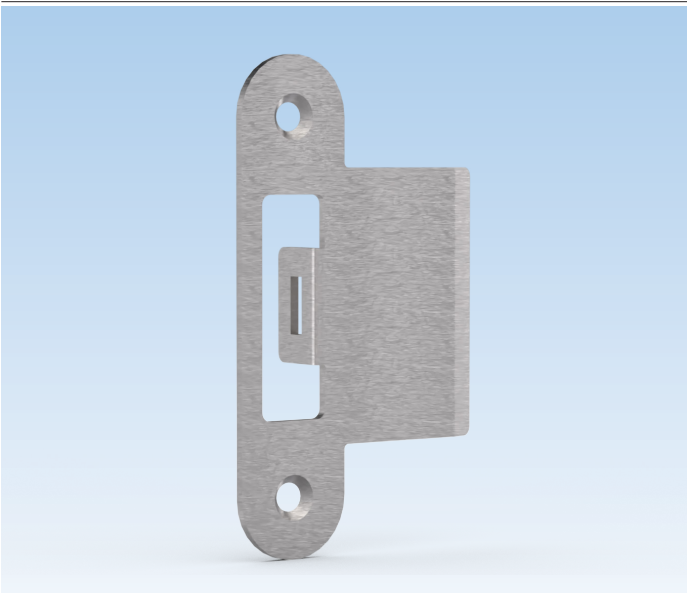
Striker with Extended Lip

| Description | PU | Part Number |
|--|----|----------------|
| Latchbolt strike plate for 45mm (1 3/4") thick doors | 10 | 9-C4776-45-0-* |
| Latchbolt strike plate for 57mm (2 1/4") thick doors | 10 | 9-C4776-57-0-* |
| 11 = Satin Nickel, 6 = Black * = Color PU = Packaging Unit | | |



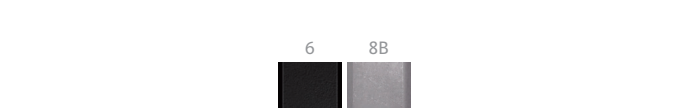
Additional information

- Made of stainless steel
- Non-handed
- With clear protective film
- Two #8 x 5/8 FH/PH screws included
- For use with Automatic extension



| Top and Bottom Striker with Extended Lip | | |
|--|----|----------------|
| Description | PU | Part Number |
| Latchbolt strike plate for 76mm (3") thick doors | 10 | 9-C4716-59-0-* |
| * = Color PU = Packaging Unit | | |

8B = Stainless Steel

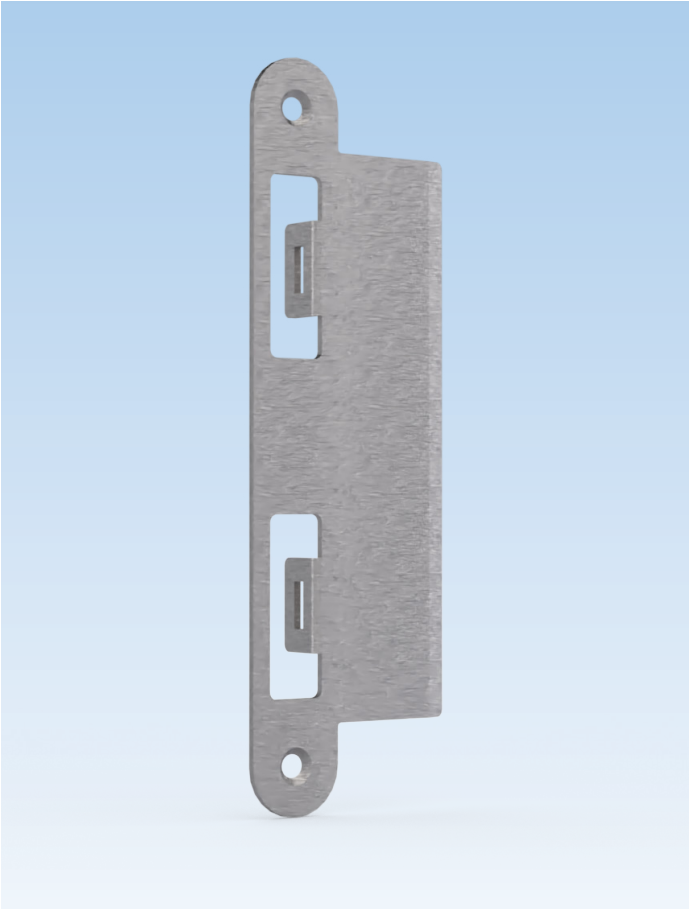


Additional information

- Made in stainless steel
- Non-handed
- Two #8 x 5/8 FH/PH screws included
- For use with GU-SECURY Automatic door lock

Strike Plates

for Door Lock



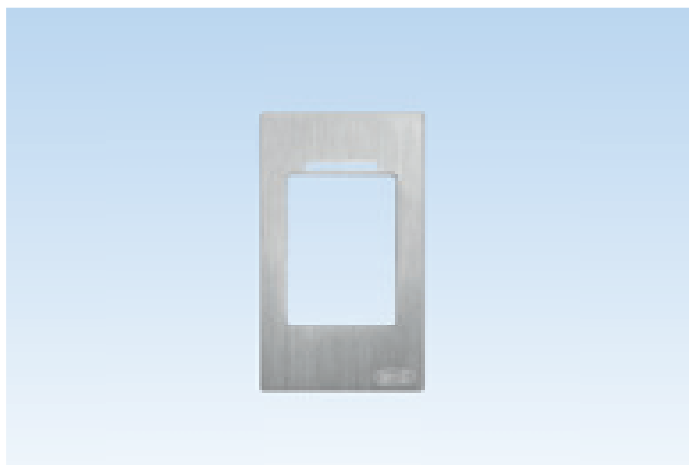
Middle Striker with Extended Lip

| Description | PU | Part Number |
|---|-----------|---------------------|
| Latch and deadbolt strike plate for 76mm (3") thick doors | 10 | 9-C4717-59-0-* |
| 8B = Stainless Steel | * = Color | PU = Packaging Unit |



Additional information

- Made in stainless steel
- Non-handed
- Two #8 x 5/8 FH/PH screws included
- For use with GU-SECURY Automatic door lock

**Substitute Faceplate**

| Description | Color | PU | Part Number |
|----------------------|-----------------|----|----------------|
| Substitute faceplate | Stainless steel | 1 | B-55606-00-1-1 |
| PU = Packaging Unit | | | |

Additional information

- Made of Stainless steel
- Replacement part for K-C5560-20-4-8 and K-C5560-23-4-8

**Dust Cup with Edge**

| Description | Color | PU | Part Number |
|---------------------|-------|----|----------------|
| Plastic cup - 25mm | Black | 10 | 9-C4765-00-0-6 |
| Plastic cup - 15mm | Black | 10 | 9-C4765-0A-0-6 |
| PU = Packaging Unit | | | |

Additional information

- Use for latch and 2 automatic latches (optional)
- Dimensions for plastic cup - 25mm:
 - Length: 62mm
 - Width: 19.5mm
 - Depth: 25.8mm
- Dimensions for plastic cup - 15 mm:
 - Length: 62mm
 - Width: 19.5mm
 - Depth: 16mm

**Fastening Screws**

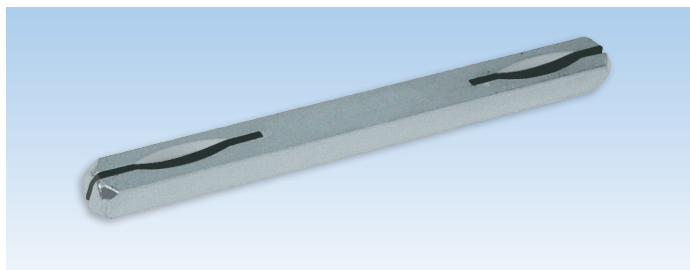
| Description | Color | PU | Part Number |
|---------------------|-----------------|------|----------------|
| D1 screws | Stainless Steel | 1000 | 9-C5362-32-0-8 |
| PU = Packaging Unit | | | |

Additional information

- Stainless steel lock fastening screws
- Type D1 with self-drilling spiral point and high duplex thread with "Quadrex" socket
- Sharp tip for quick drive

Accessories

For Door Lock



8mm Spindle

| Description | Color | PU | Part Number |
|---|-------|----|----------------|
| 8 x 8 x 120mm spindle for 41-57mm thick doors (1 spindle is supplied with door handle kit) | Zinc | 10 | 9-U8100-20-0-8 |
| 8 x 8 x 130mm spindle for 57-76mm thick doors | Zinc | 10 | 9-U8100-30-0-8 |
| PU = Packaging Unit | | | |



Torx 15 T-Key

| Description | Color | PU | Part Number |
|---------------------|-------|----|----------------|
| Torx key | Steel | 1 | H-00346-15-0-0 |
| PU = Packaging Unit | | | |

Additional information

- Used for connecting SH2 and Automatic extensions



4mm Allen T-Key

| Description | Color | PU | Part Number |
|---------------------|-------|----|----------------|
| Allen key | Steel | 1 | H-00345-04-0-0 |
| PU = Packaging Unit | | | |

Additional information

- Used for reversing Automatic latchbolts on GU-SECURY Automatic lock and extension

Accessories

For Door Lock



Construction Key

| Description | Color | PU | Part Number |
|-----------------------|-------|----|----------------|
| Construction 7,8,10mm | Black | 10 | 9-U0001-01-0-0 |
| PU = Packaging Unit | | | |

Additional information

The construction key is available for those who prefer to install the decorative hardware trim and lever sets on doors after the construction has been completed. Installing the escutcheon plates and levers in the final stage of construction prevents the decorative trim from becoming scratched or damaged.

The construction key has been designed to accommodate multipoint door hardware (8mm square), tilt-turn hardware (7mm square) and lift-slide hardware (10mm square).



| Construction Key | | | |
|--------------------------|-------|----|-------------|
| Description | Color | PU | Part Number |
| Key Tool Cylinder Length | Red | 1 | B 3539 0111 |
| PU = Packaging Unit | | | |

Additional information

The construction key is available for those who prefer to install the decorative hardware trim and lever sets on doors after the construction has been completed. Installing the escutcheon plates and levers in the final stage of construction prevents the decorative trim from becoming scratched or damaged.

Used to operate the multipoint door hardware through the profile cylinder opening, and to measure the profile cylinder length required from the side scale.



WINDOW TECHNOLOGY
DOOR TECHNOLOGY
AUTOMATIC ENTRANCE SYSTEMS
BUILDING MANAGEMENT SYSTEMS

HEAD OFFICE

Ferco Architectural Hardware Inc.
2000, Berlier St.
Laval, QC H7L 4S4
Tel.: 450 973-1437
1 800 355-8810
Fax: 450 973-7661
ferco@ferco.ca

ONTARIO / WESTERN PROVINCES

Tel.: 905 282-9588
1 800 668-5310
Fax: 905 282-9915

UNITED STATES

Tel.: 1 800 927-1097
Fax: 1 888 454-0161

www.ferco.ca

Edition 05.2022 | Printed in Canada

Securing technology for you

